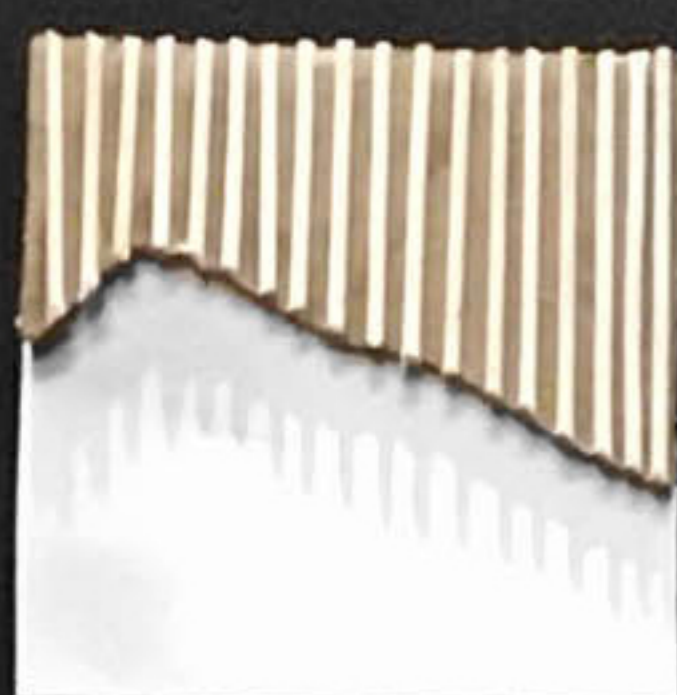




# HEATHERWICK STUDIO

Heatherwick Studio is a team of over 200 problem solvers dedicated to making the physical world around us better for everyone. Based out of our combined workshop and design studio in Central London, we create buildings, spaces, master-plans, objects and infrastructure. Focusing on large scale projects in cities all over the world, we prioritise those with the greatest positive social impact. Working as practical inventors with no signature style, our motivation is to design soulful and interesting places which embrace and celebrate the complexities of the real world. The approach driving everything is to lead from human experience rather than any fixed design dogma. The studio's founder Thomas Heatherwick comes

from a background immersed in materials and making. His curiosity and passion for problem-solving matured into the studio's current design process where every architect, designer, landscape architect and maker is encouraged to challenge and contribute ideas. Positive and pragmatic, the studio's team are collaborators whose role is to listen, question, then lead the conception and construction of special and unusual places. Ingenuity and inspiration are used to make projects that are affordable, buildable and sustainable. And our client is vital, who comes on the journey and challenges our thinking; together we look for the opportunities that might traditionally be overlooked. Our best future projects are the ones that will teach us the most.



otevřená kompozice



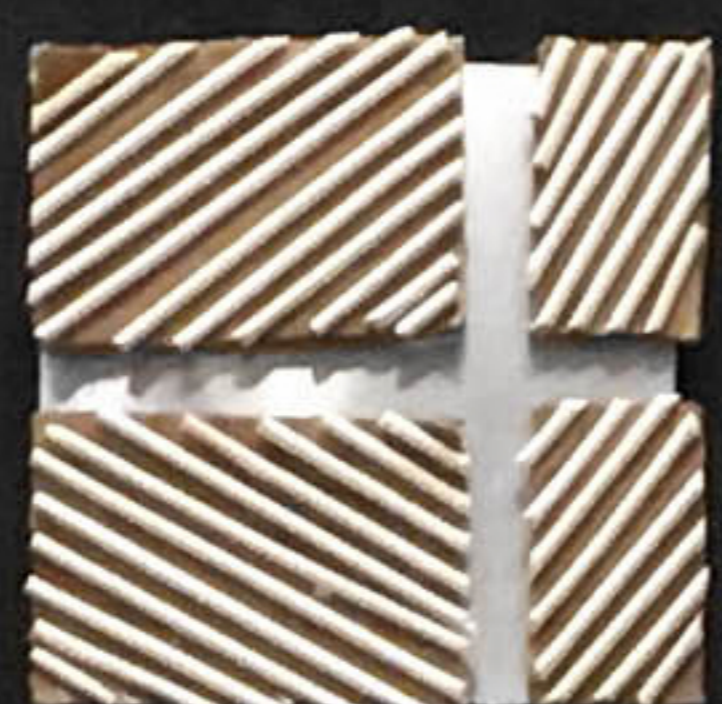
symetrie



rytmus



uzavřená kompozice



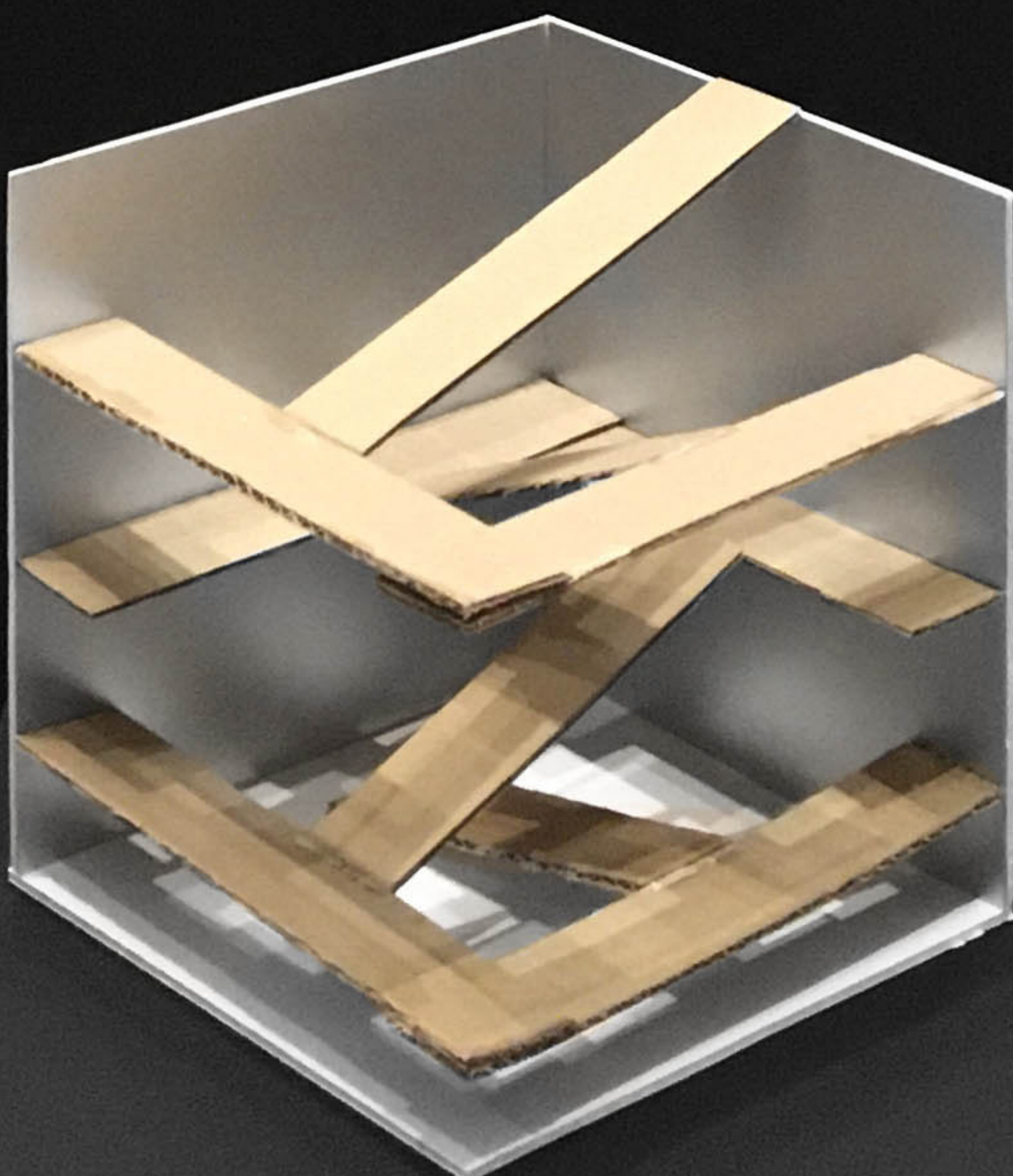
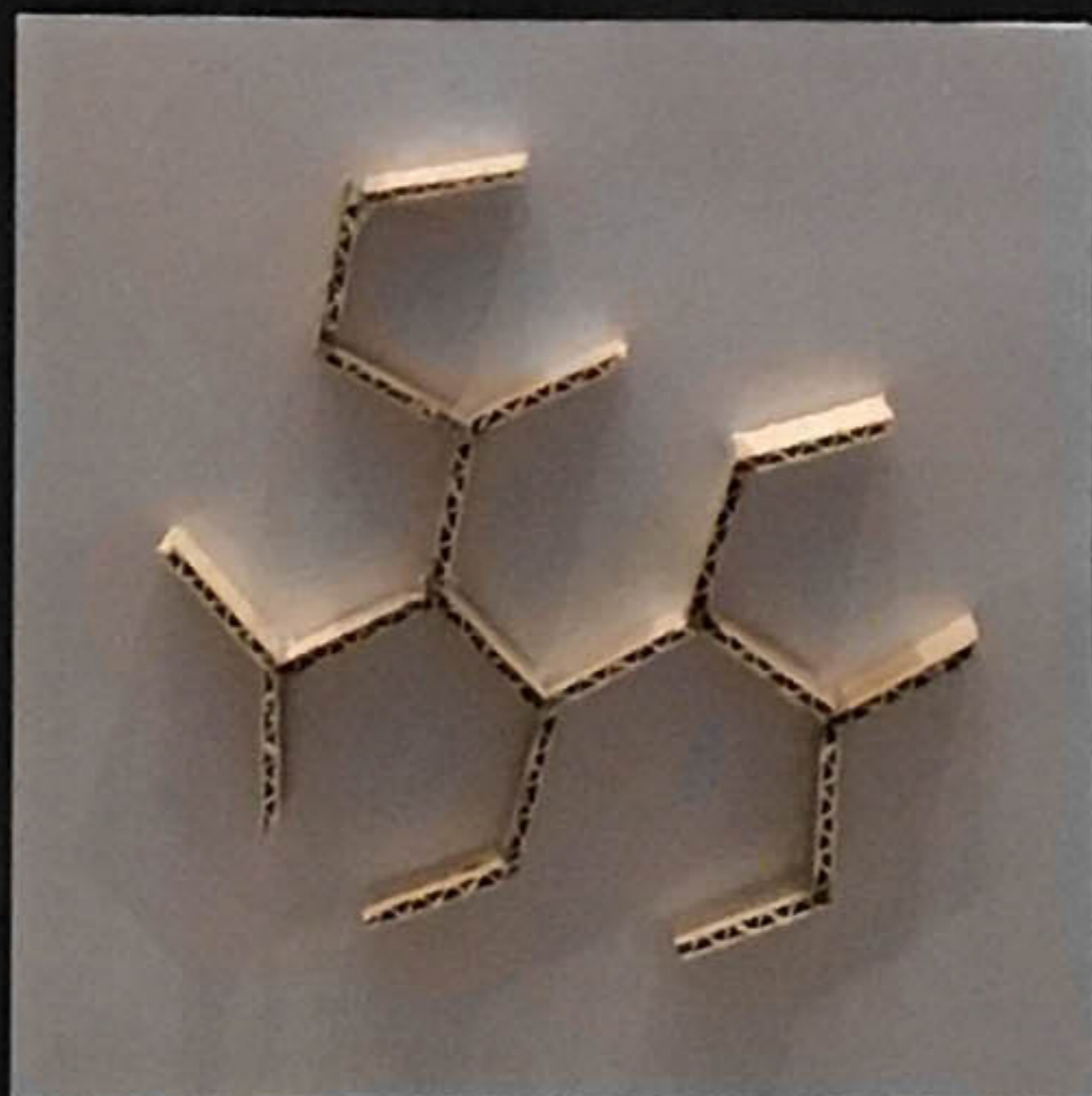
asymetrie



gradace



Osada Baba - dům Palička



Little Island or Pier 56 Plans arose in November 2014 for a new park designed by Heatherwick Studio, with estimates of the 2.3-acre. The park will float completely above the river Hutsen, resting on 300 concrete pillars. Park will be finish in 2021.



The Bund Finance Center is a building in The Bund, Shanghai, China. It is notable for its three, overlapping, moving layers of vertical stainless steel pipes. These layers, inspired by theatre curtains, slowly rotate around the building. Designed by Heatherwick studio and Foster studio



Bombay sapphire distillery glasshouse. The visitor centre included a new construction in 2010 by Thomas Heatherwick of two glasshouses for plants used as botanicals in the production of Bombay Sapphire gin.



ATELIÉR ARCHITEKTONICKÉ KOMPOZICE

ZS 2020/2021

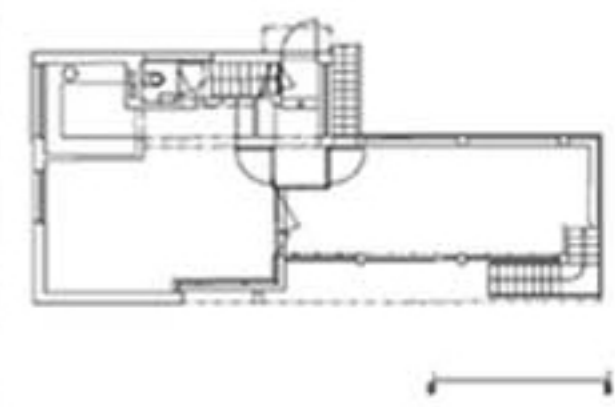
**ZUZANA PETRÁČKOVÁ**  
SKUPINA III

VYUČUJÍCÍ:

Ing. Arch. BĚLA MENČLOVÁ  
Ing. Arch. EDITA CESTROVÁ



Dům Jiřího Paličky a Emilie Paličkové je funkcionalistická stavba v Osadě Baba, která vznikla v letech 1931–1932 podle návrhů holandského architekta Mária Stama a Jiřího Paličky jako vlastní dům Jiřího Paličky a textilní výtvarnice Emilie Paličkové-Mildeové. Dům postavila stavební firma MOK, kterou Jiří Palička vlastnil



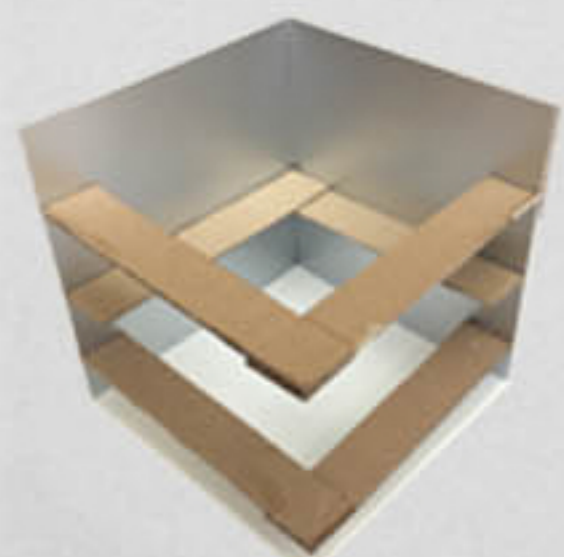
Pláště



Návrh vysokého reliéfu 1



Návrh vysokého reliéfu 2





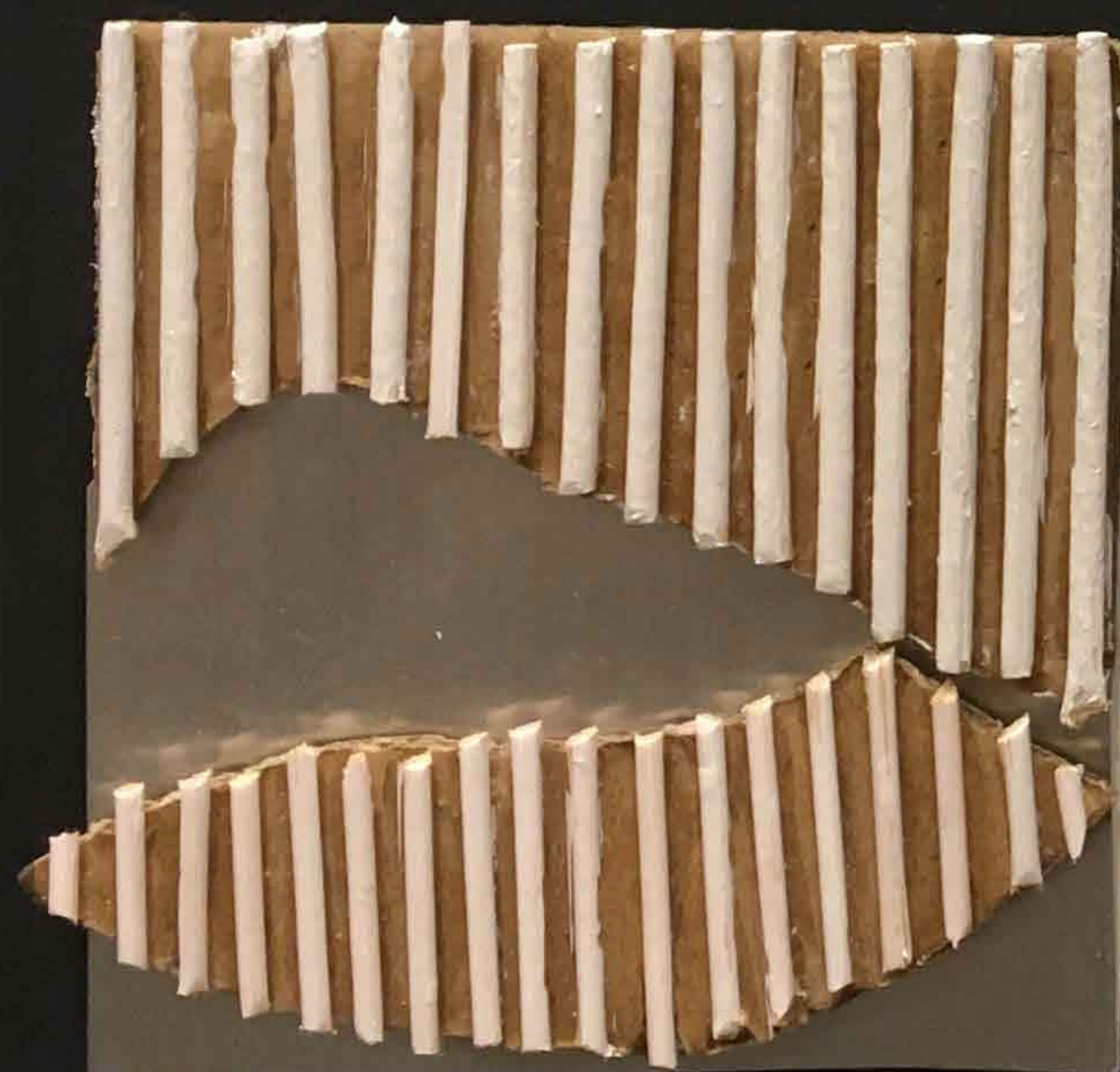
otevřená kompozice



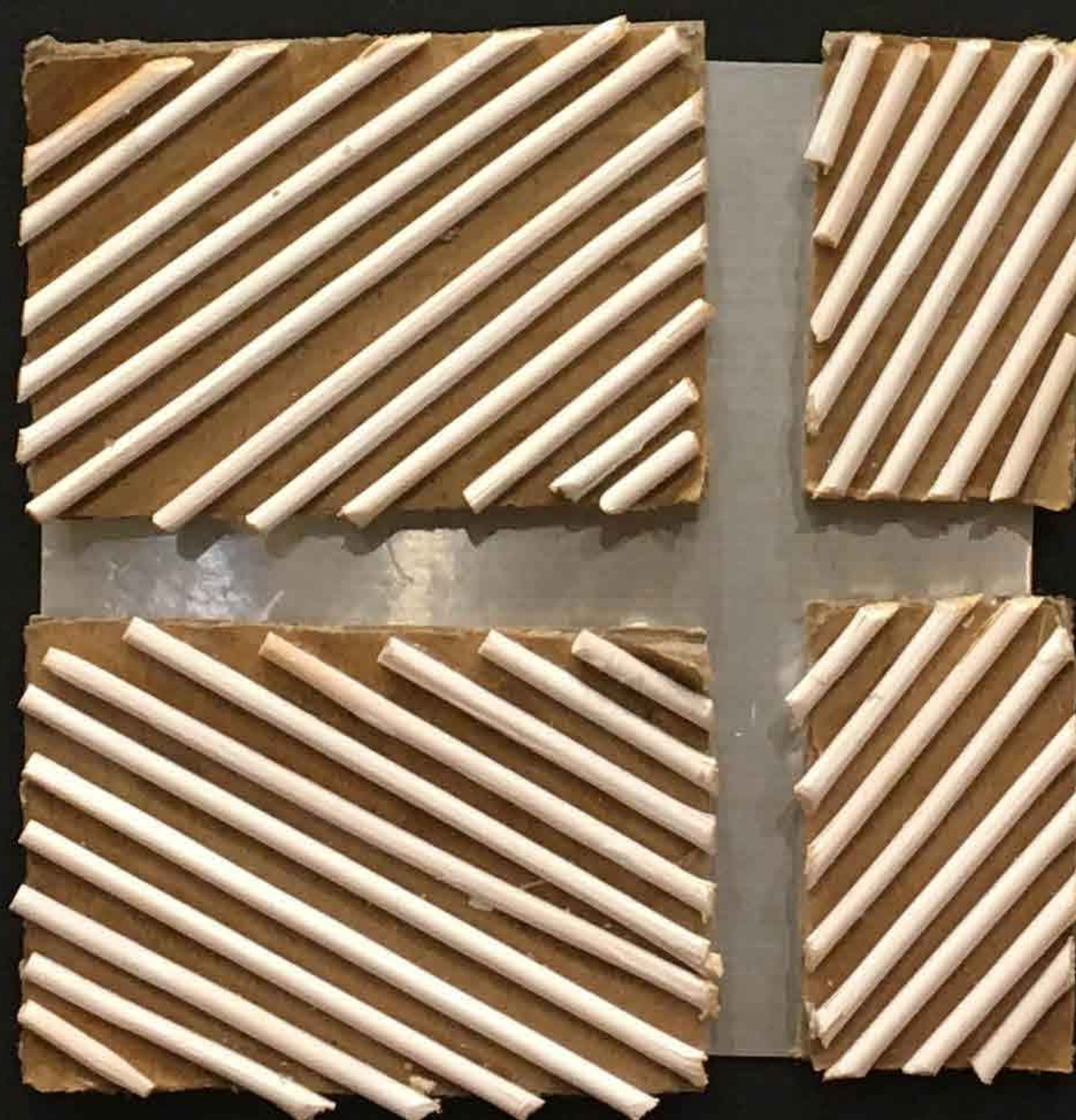
symetrie



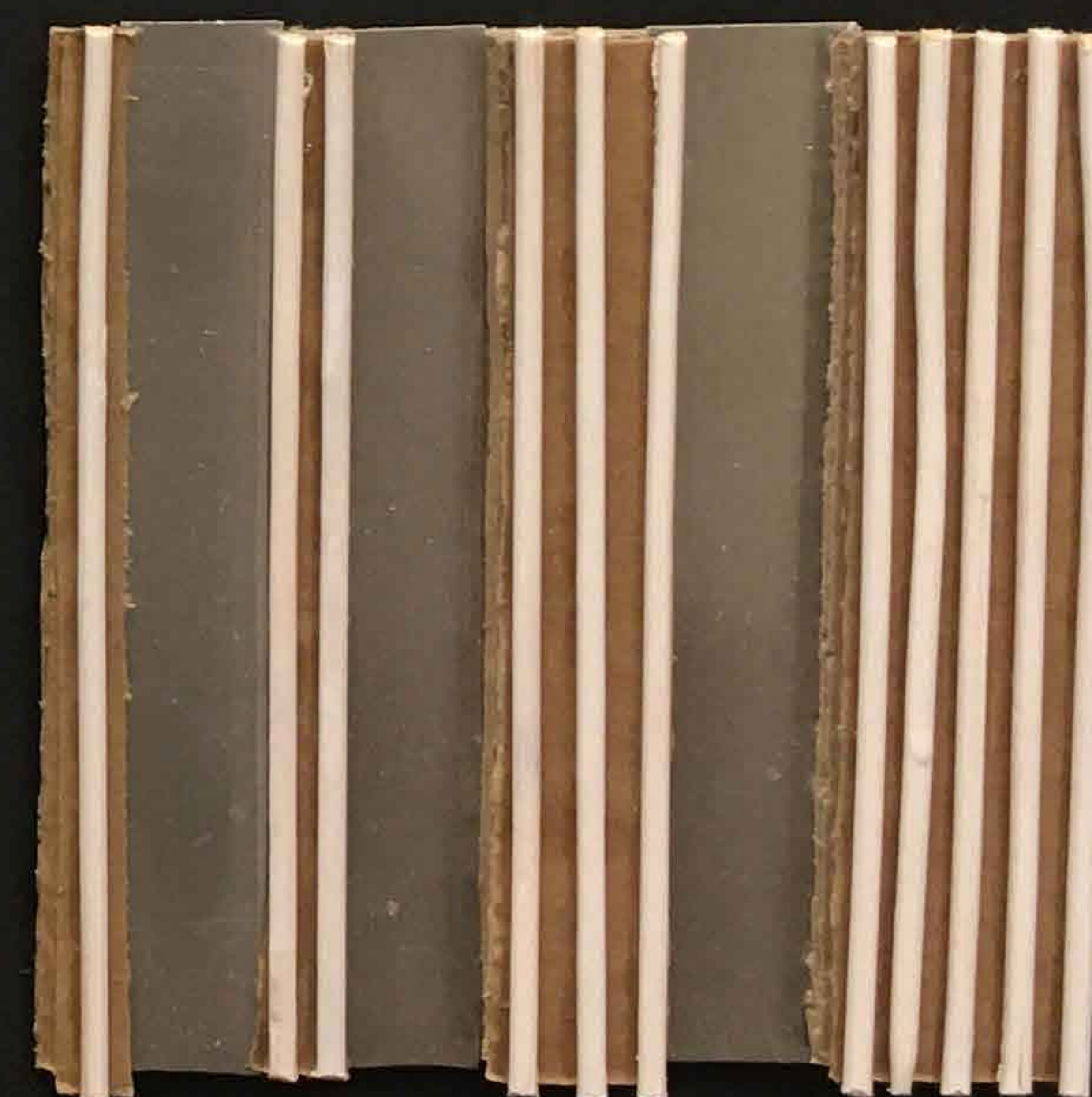
rytmus



uzavřená kompozice



asymetrie



gradace

