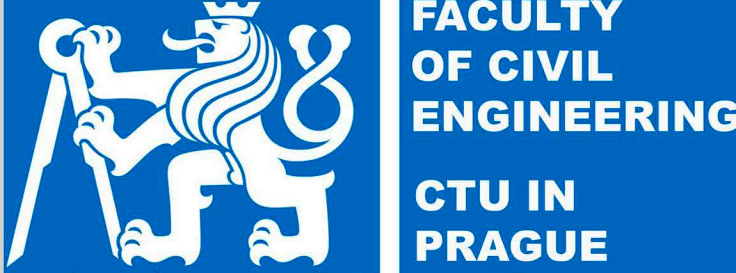




CARDO AND DECUMANUS
DESIGN STUDIO 1M 129ADM WS

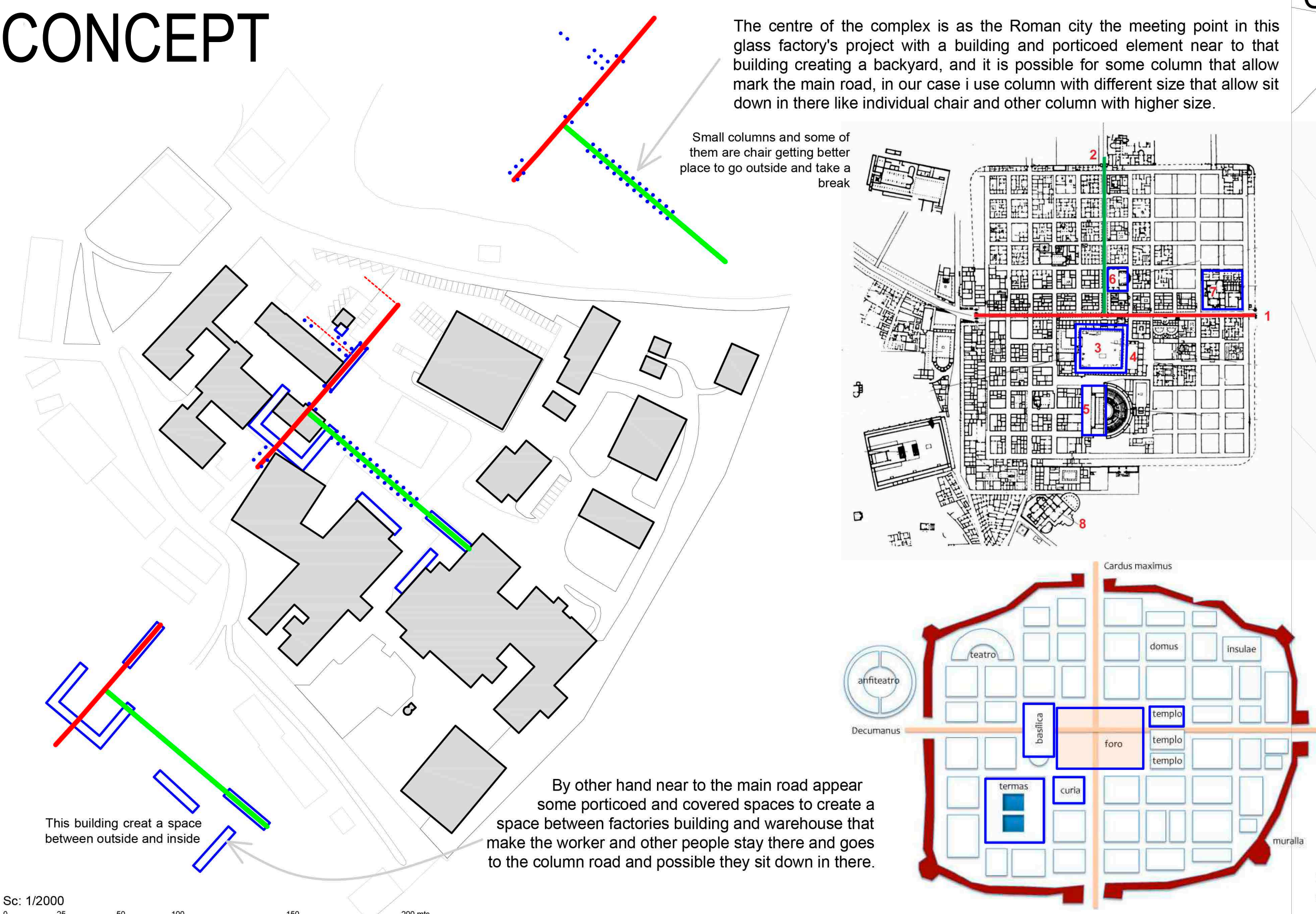
MARCO BRUNO ANDRADE MAIO
ADAM BOHATY



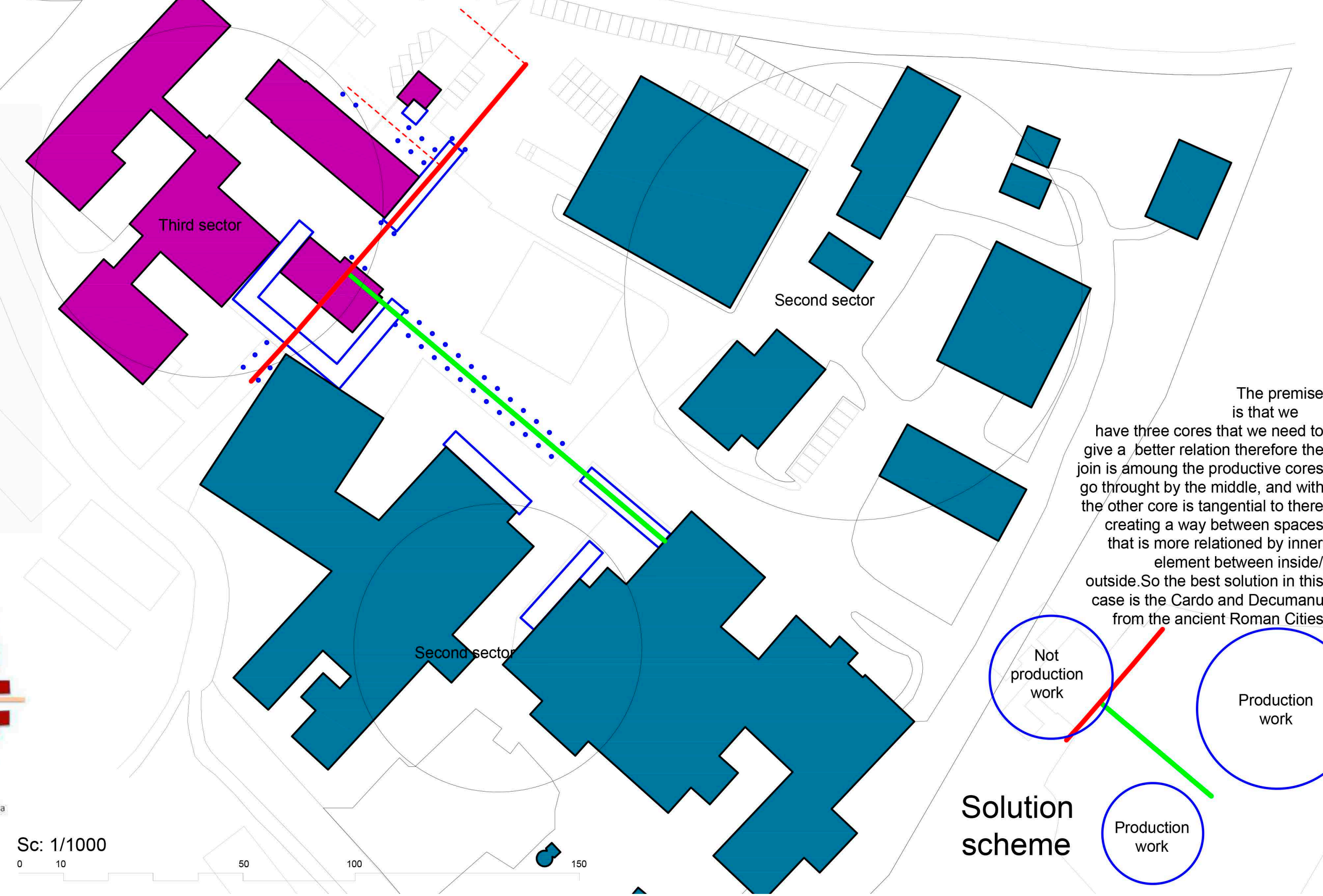
ALBERTO SANTIAGO PÉREZ MUÑOZ
ERASMUS STUDENT



CONCEPT

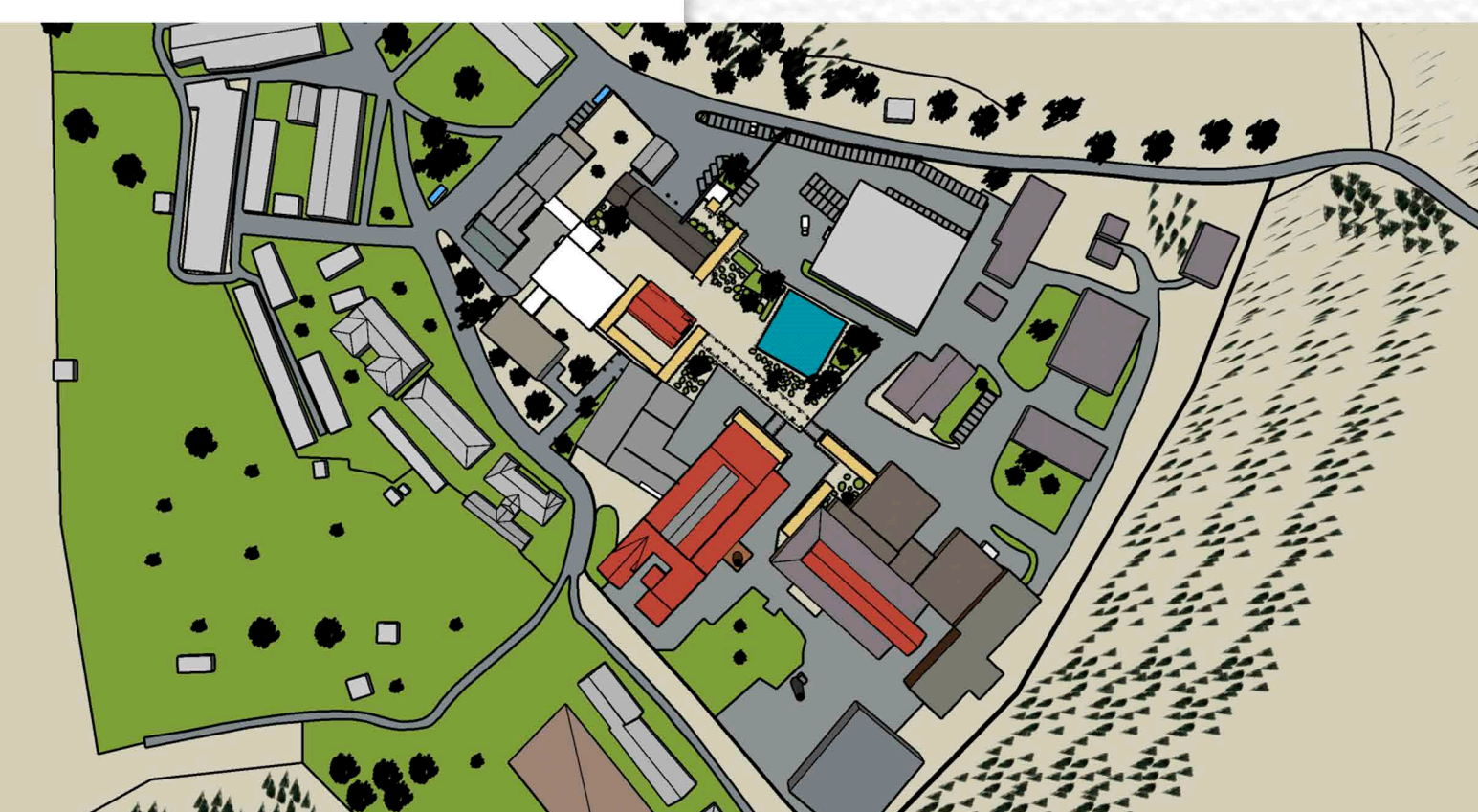
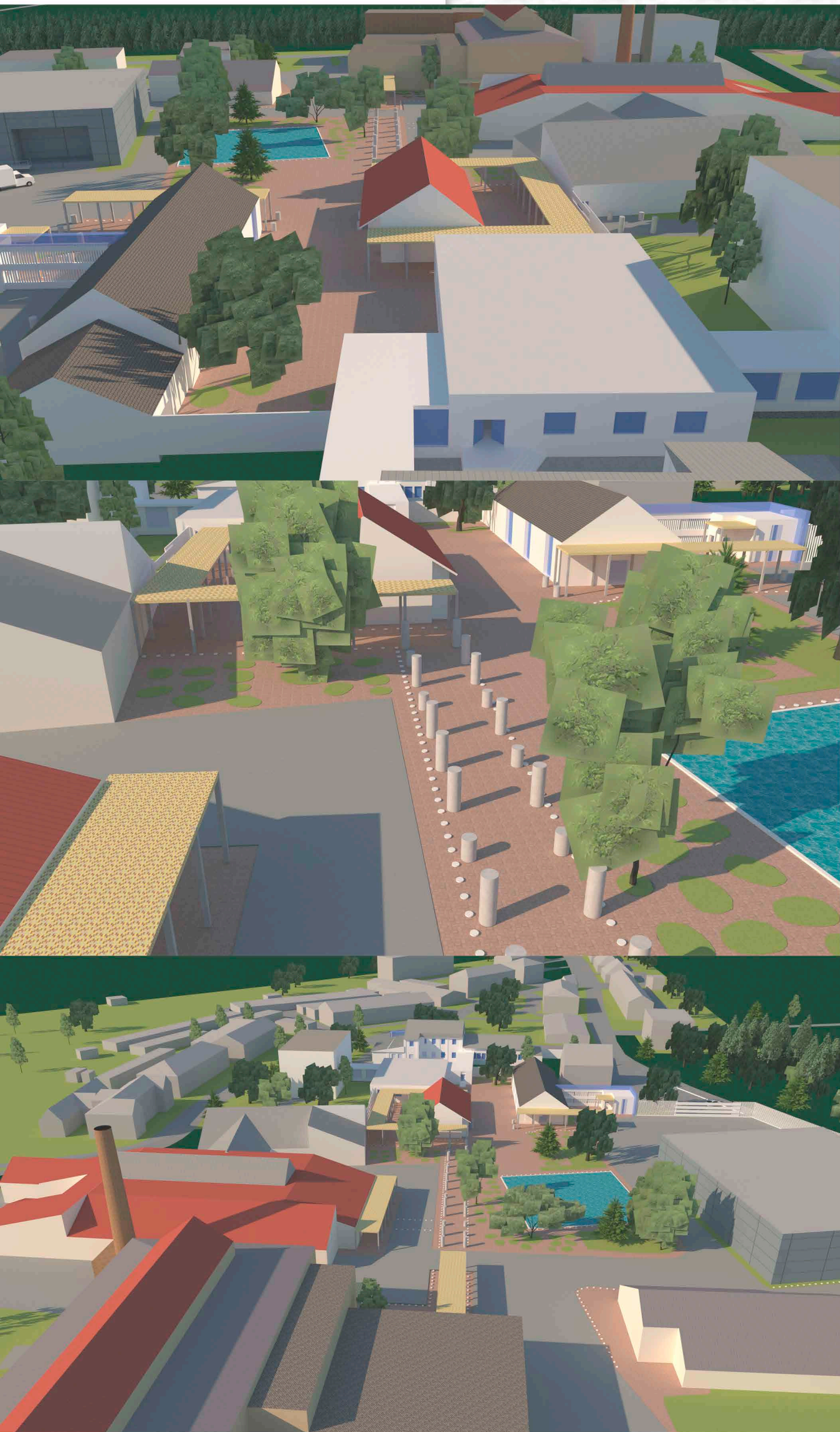


Cardo and Decumanu, Concept



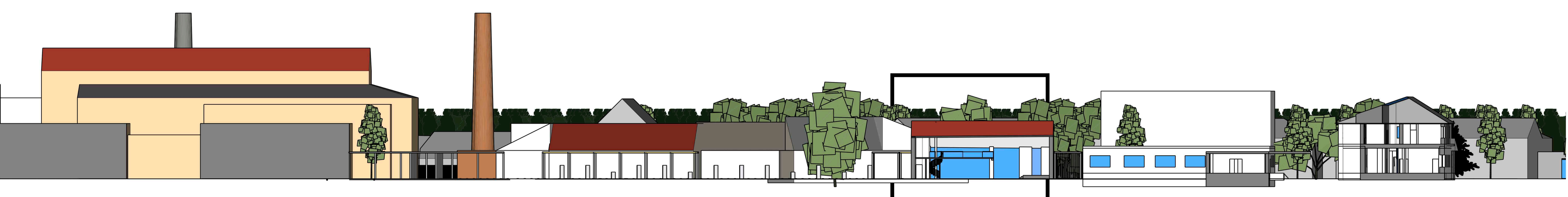
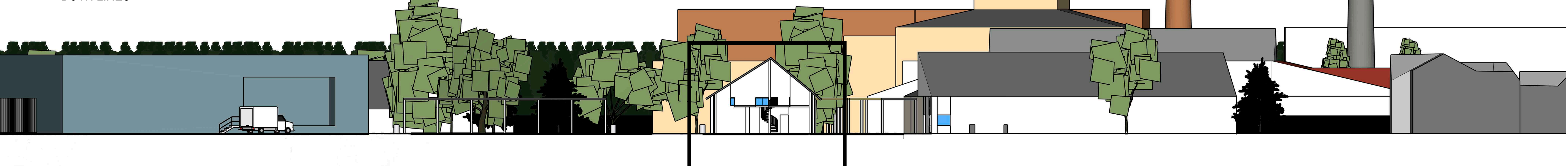
PLAN

THIS AXIS MAKE A POINT TO MEETING AND CONNECT IN THE SIGHT WITH THE CONTINUE OF THE ROAD, CREATING A SPECIAL CONCENTRATION OF PEOPLE, WORKERS OR OTHER PEOPLE THAT CAN MAKE FRIENDSHIP, CONTRIBUTING TO OTHER WORKERS. ALTHOUGH THE IDEA IT IS FOR WORKER IT VERY POSSIBLE TO APPLY TO EVERYBODY IN THE VILLA THEREFORE IF WE COME EVERYBODY TO THE MEETING POINT AND WE HAVE OTHER SPECIAL SPACES LIKE RESTAURANT/ BAR, HOSTEL AND ACCOMDATION FOR WORKERS WE CAN GIVE ADVANTAGE TO SOCIAL LIFE IN THE POPULATION

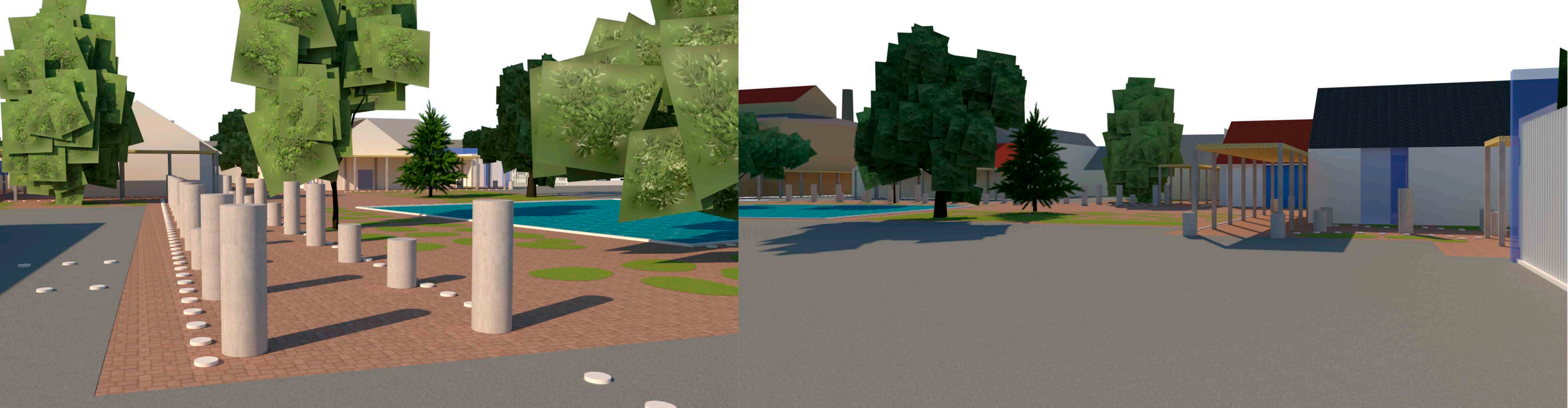


SECTIONS

SECTIONS ARE BY THE WAY IN THE CARDO AND DEUMANUS, SO WHY THIS SECTIONS EXPLAINS THE WHOLE PROJECT WITH THE POINT WHERE INTERSECT BOTH LINES



VIEW



MATERIAL

CONCRETE
CERAMIC
GLASS
ALUMINIUM
STELL



MEETING POINT

THIS MEETING POINT IS A SPACE WITH TWO FLOORS THAT PROVIDES THREE WORK SPACES IN GENERAL, IN ADDITION TO OTHER SECONDARY ONES. THE VISUAL CONNECTION PROVIDED BY THE CONCEPT OF IDEA IN ADDITION TO INTERCONNECTING ALL THE OTHER SPACES GENERATES MOVEMENTS OF PEOPLE AND RELATIONSHIPS THAT GIVE IT CHARACTER.

