



NEW USE OF THE FORTIFICATION OF THE MLADÁ BOLESLAV CASTLE

Sofia Viana
FCE CTU in Prague (ST 2020/2021)
University of Granada, Spain (Colombian)

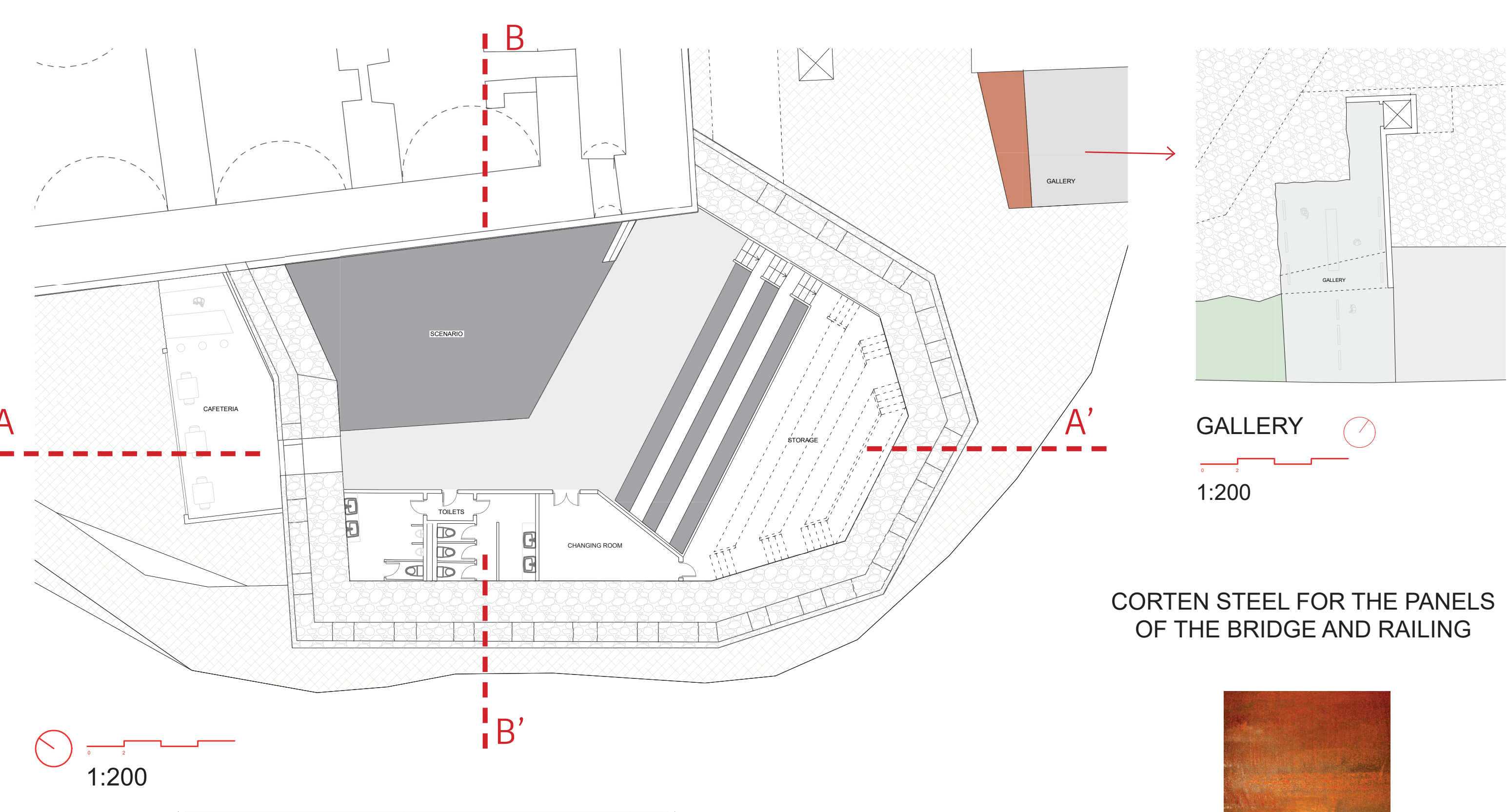


Mlada Boleslav is a city known in the past for its variety of cultural centers and nowadays for the automobile company skoda due to its great variety of company buildings.

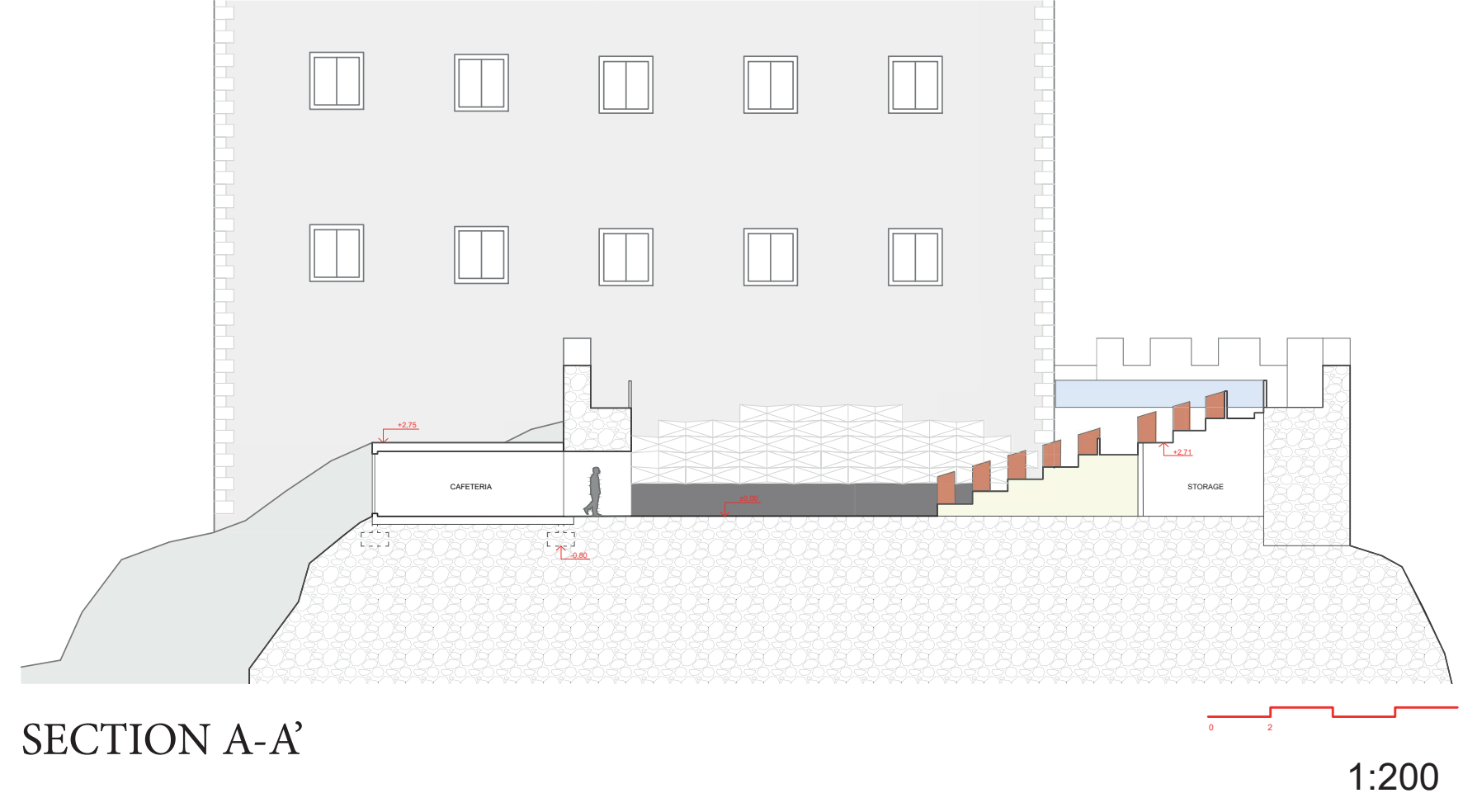
Our job is to create a functional space in the castle of the city in order to use it as an entertainment area for events and its connection with the outside for easy access.

My proposal is to connect this area through a bridge with the inside of the castle, favoring the entrance with an elevator from the bottom, which to reach it, consists of a gallery with information panels about the history of the castle and cultural exhibitions that visitors can enjoy.

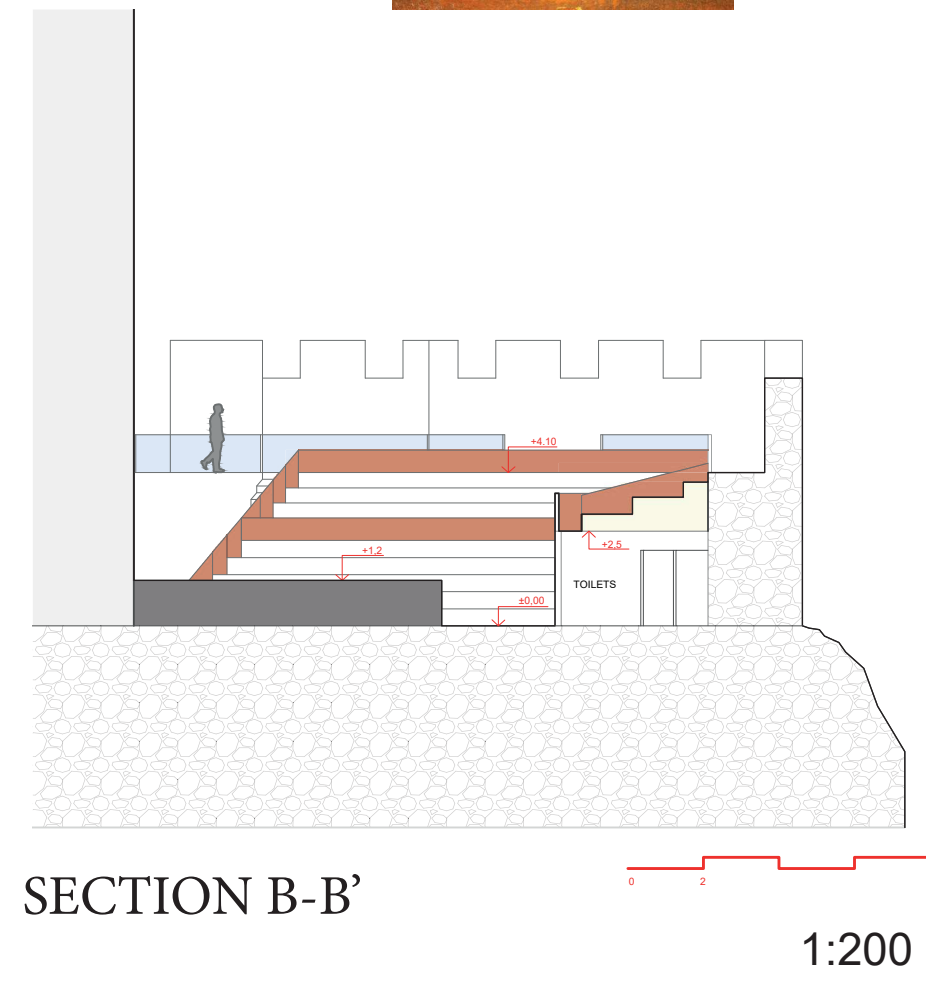
Once inside the entertainment area, we find an amphitheater design, which has stairs for access to the interior and functional spaces under the seats of the same; storage area, bathrooms and changing room. Continuing with the tour, I made a small space behind the wall with the function of cafeteria and viewpoint to enjoy the view.



CORTEN STEEL FOR THE PANELS OF THE BRIDGE AND RAILING



SECTION A-A'



SECTION B-B'