

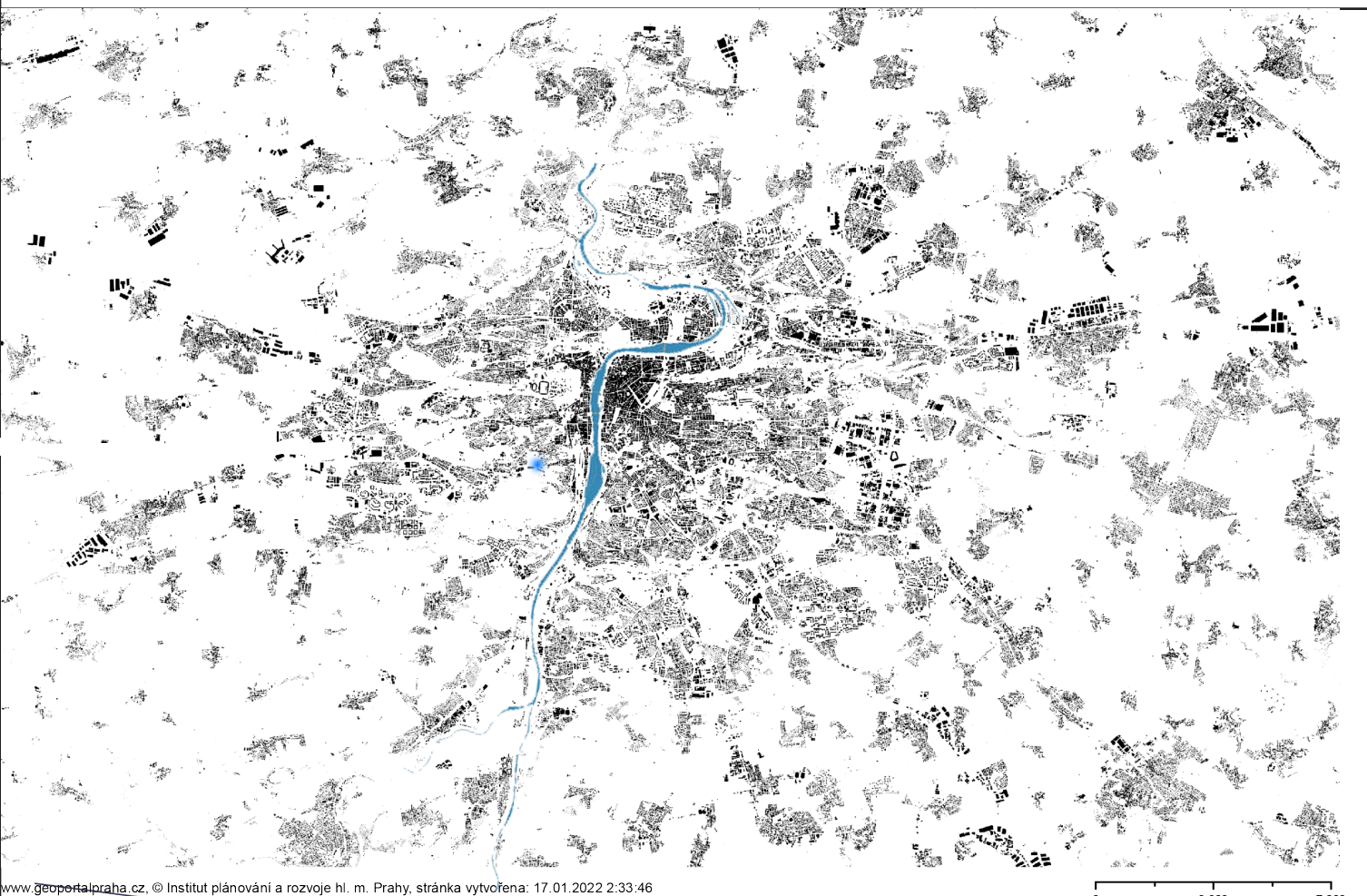


Kavárna Radlice

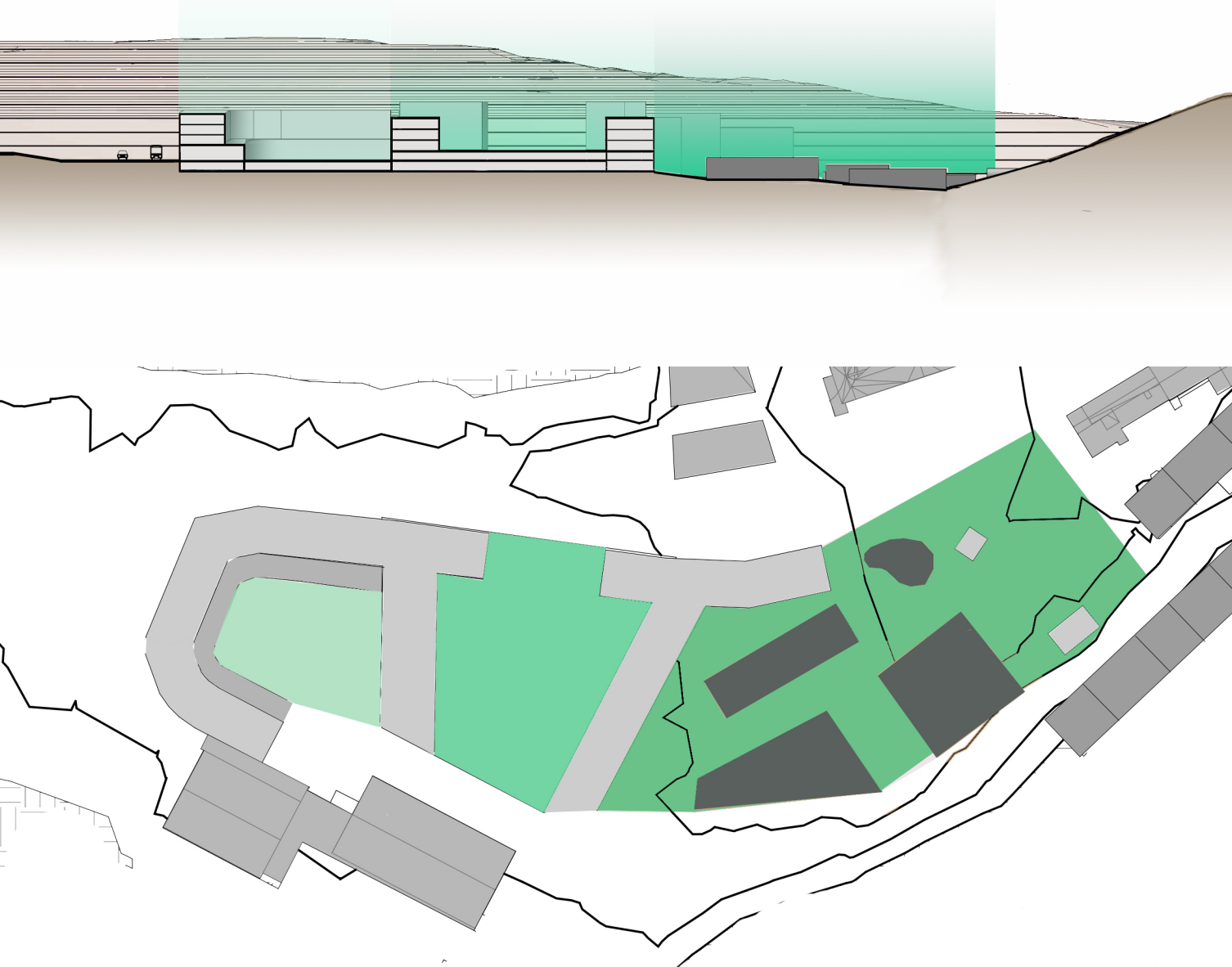
AT02 - Knytl, Šabart

Kristýna Benáková

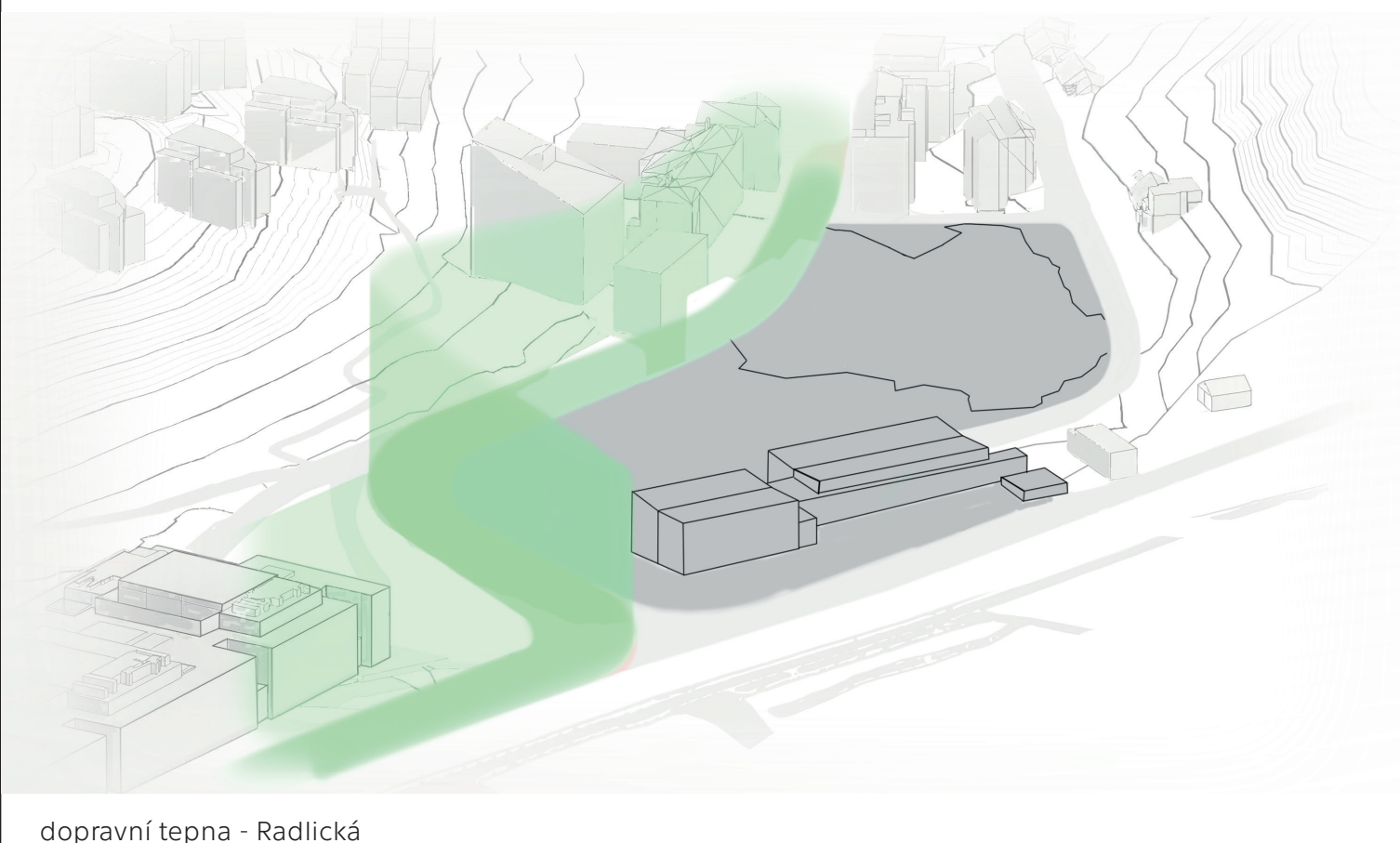
A+S FSv ČVUT v Praze  
ZS 2021/2022



situace širších vztahů  
1:150000



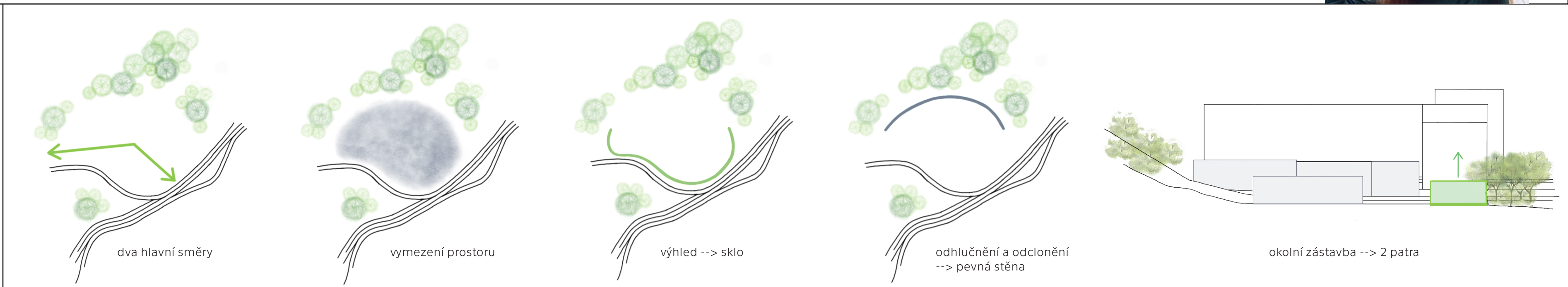
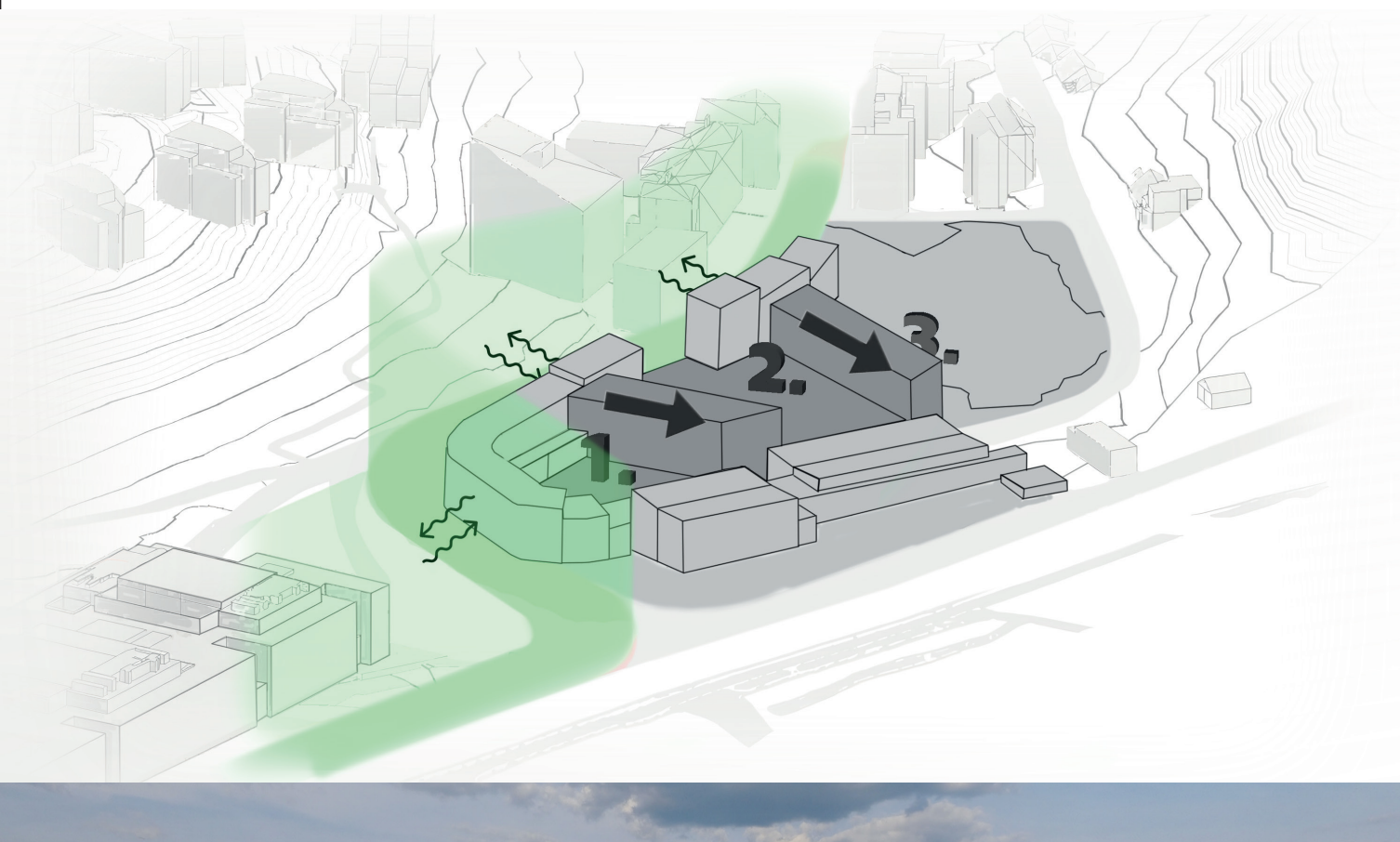
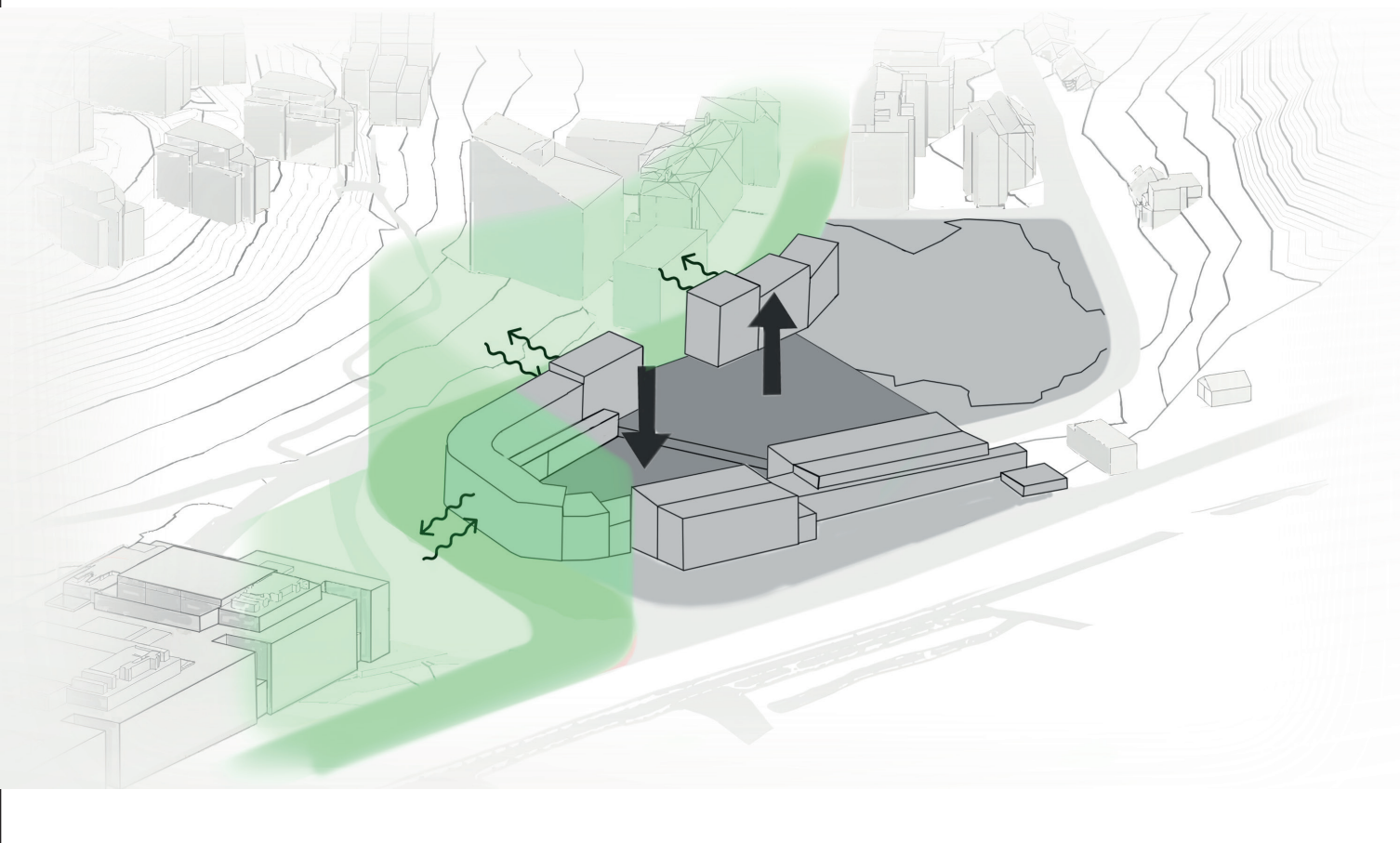
situace  
1:150



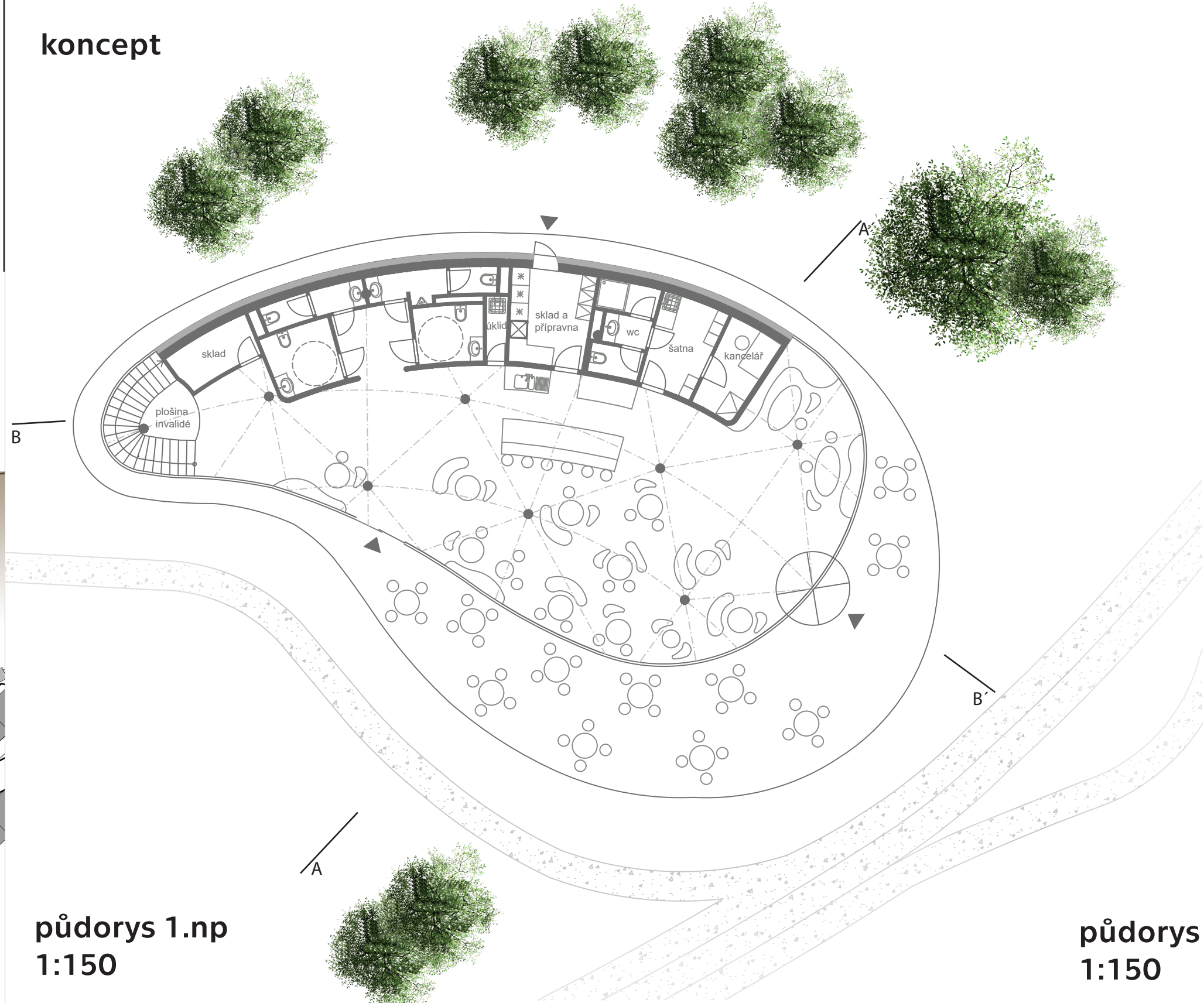
dopravní tepna - Radlická



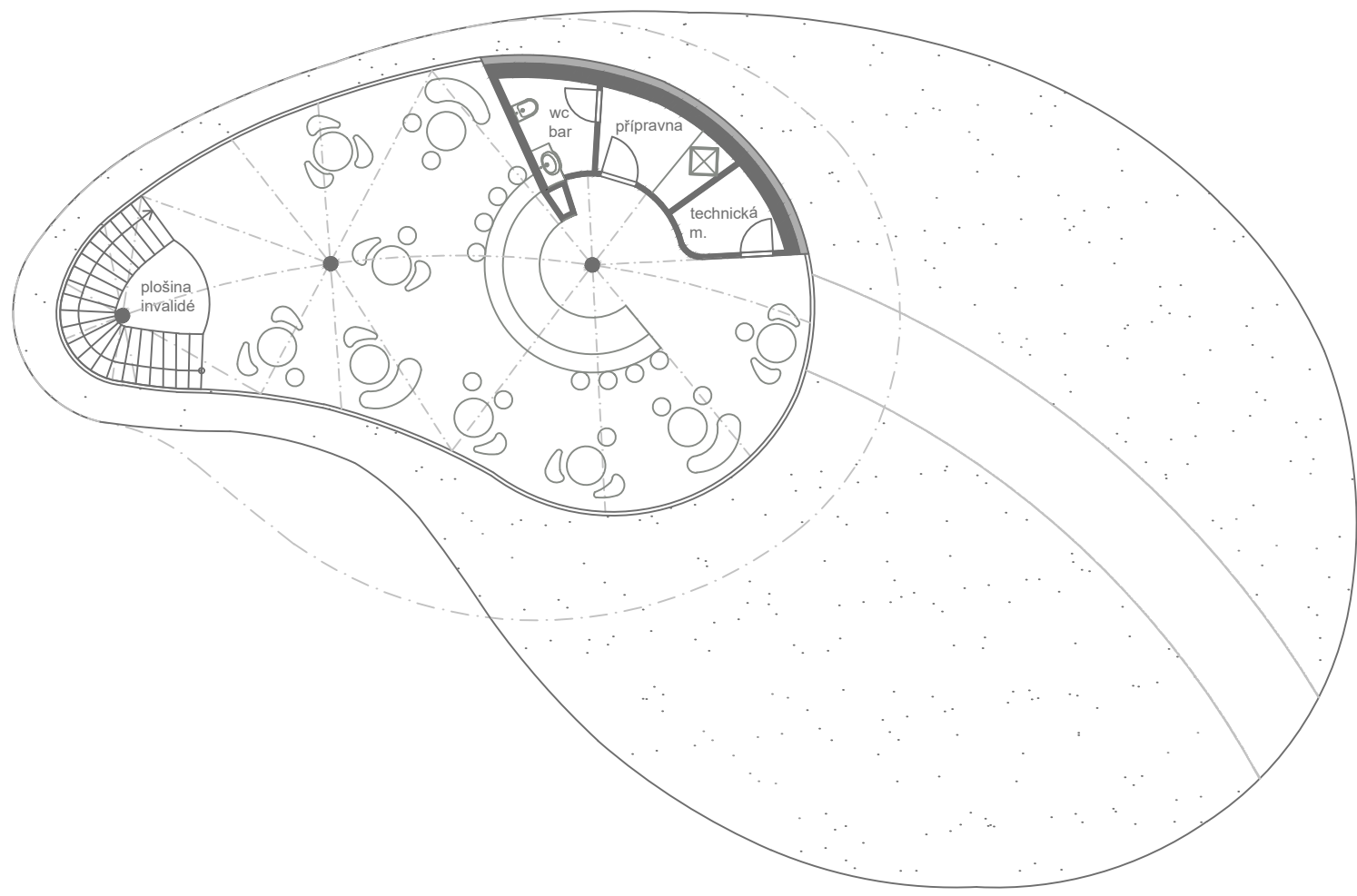
vytvoření bariéry - zklidnění vnitřního prostoru



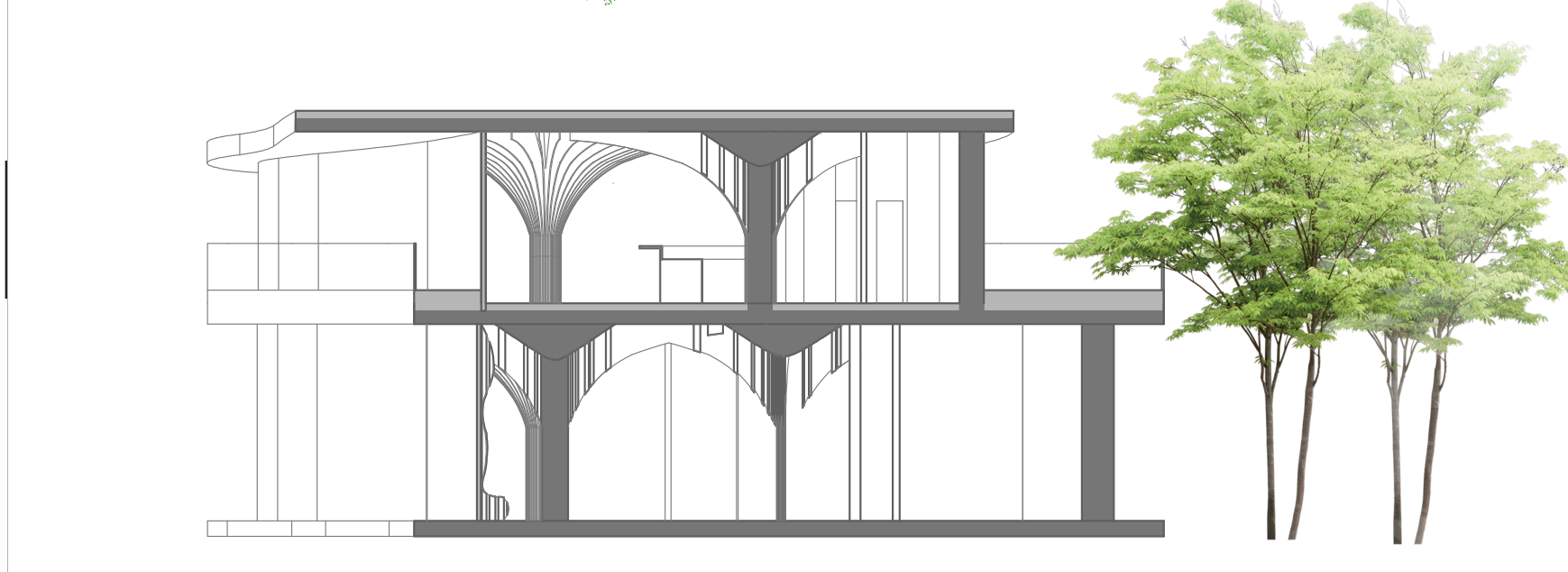
koncept



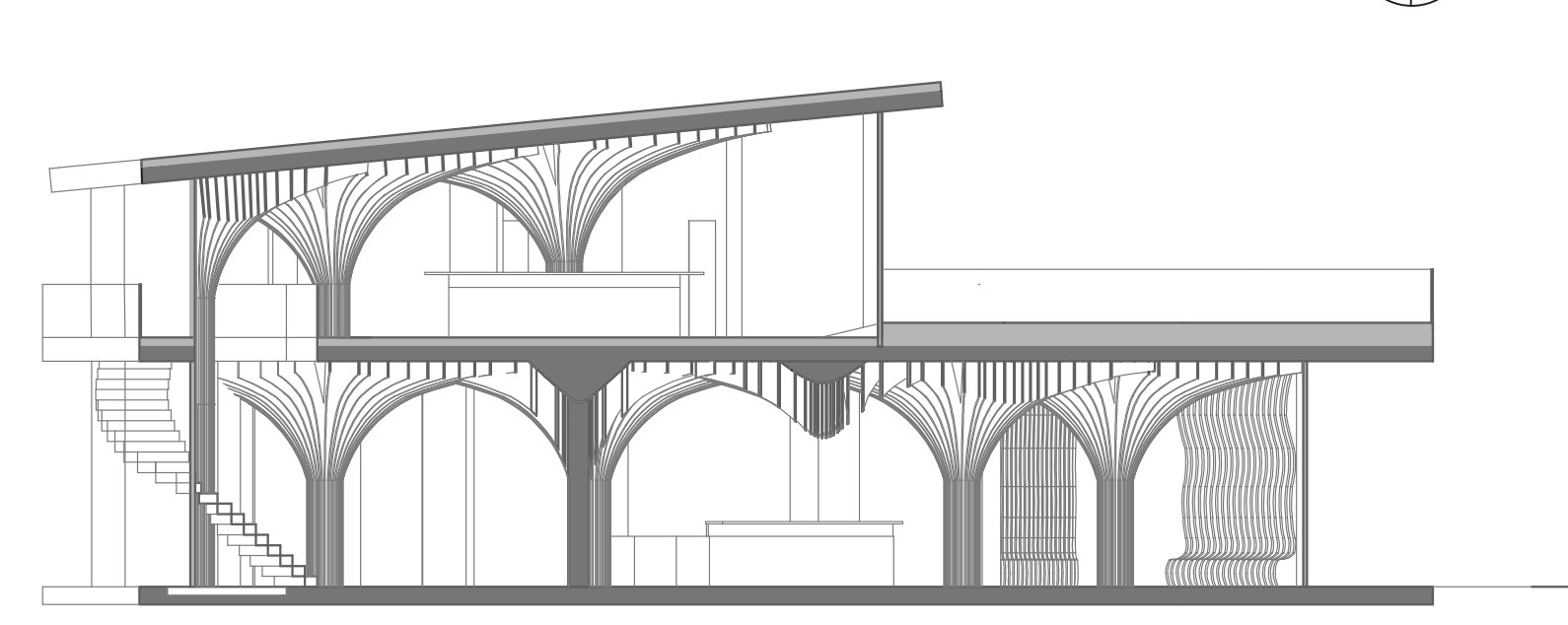
půdorys 1.np  
1:150



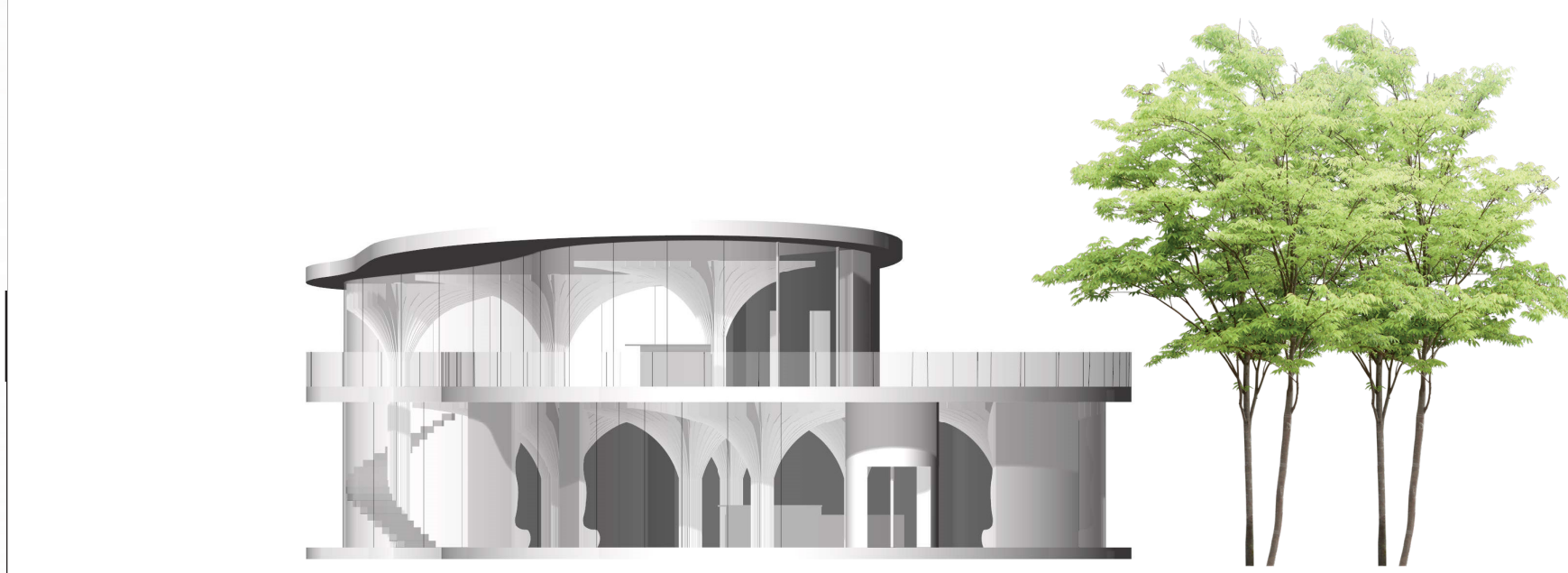
půdorys 2.np  
1:150



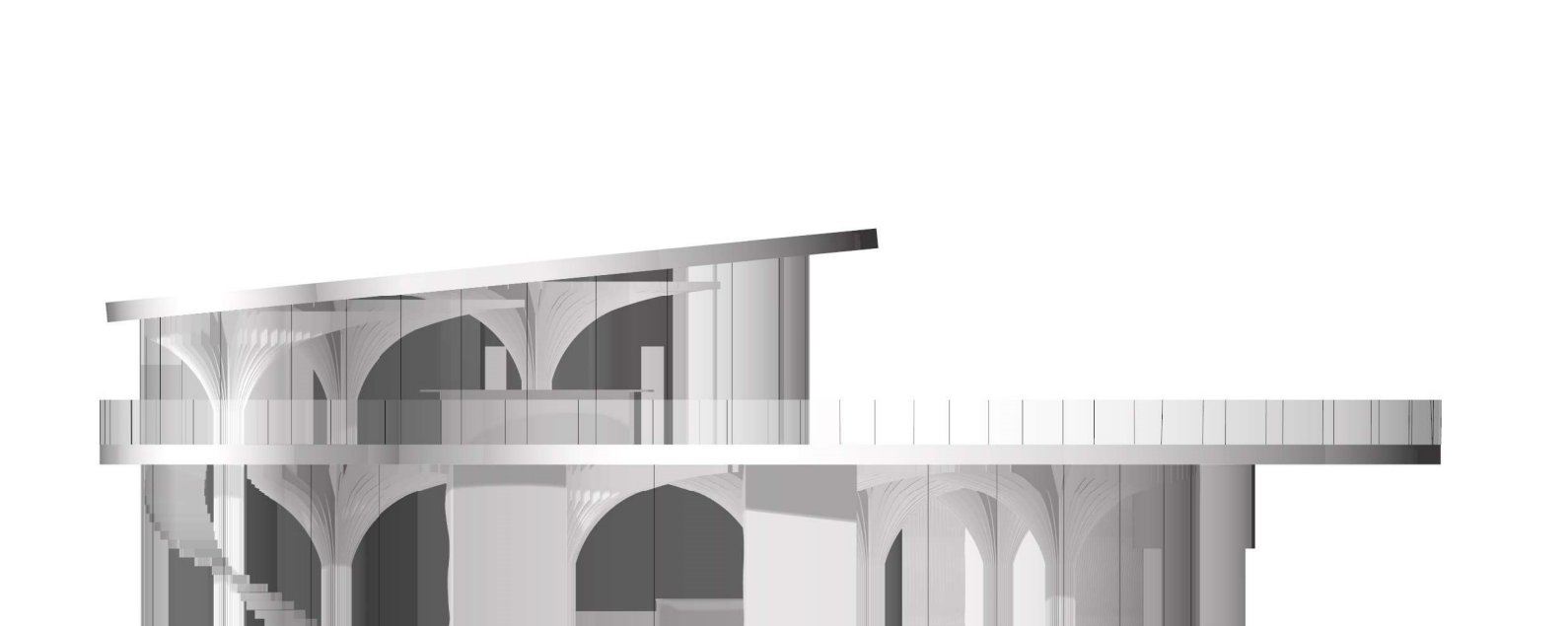
řez A - A'  
1:150



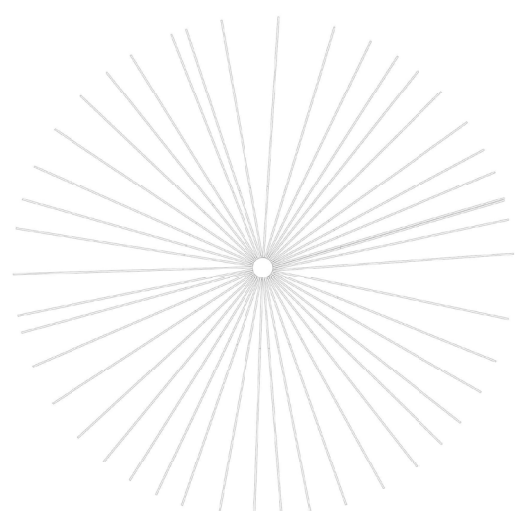
řez B - B'  
1:150



jižní pohled  
1:150



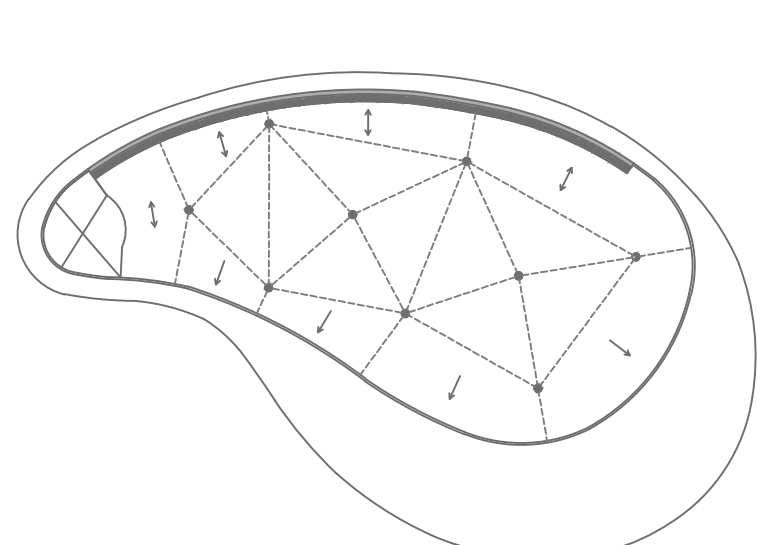
jižní pohled  
1:150



dominanta - sloupový půdorys



dominanta - sloupový řez



konstrukční schéma  
1:300

